



## Marsham Court, Marsham Street, London SW1

£700,000 Subject To Contract Leasehold, plus Share of Freehold





## Marvellous Marsham

This bright 8th floor one bed flat (with lift) has good proportions.

Alternatively, with a couple of months' notice this could make a superb first buy or pied a terre. The flat is in entirely presentable condition but the kitchen and bathroom are old enough that you could easily renovate to your own specifications- without guilt.

The block has 24-hour portorage, lift access, communal heating and hot water.

It is a short hop to Victoria Mainline Station, and Pimlico, St James Park and Westminster tube stations are all within a few minutes' walk.

Plus, the Houses of Parliament, Buckingham Palace and Tate Britain are easily accessed for all your cultural needs.

Sadly, Big Ben will be silent for the next four years!

Bedroom : Bathroom : Reception Room : Kitchen : Lift : 24 Hour Porter : Communal Heating And Hot Water : EPC Rating D

## Terms and Conditions

<b>Tenure:</b>	Leasehold; plus share of Freehold
<b>Ground Rent:</b>	Peppercorn
<b>Service Charge:</b>	£4,500 approx per annum
<b>Price:</b>	£700,000 Subject To Contract

Marsham Court, Marsham Street,  
London SW1  
£700,000 Share of Freehold

[stanleychelsea.co.uk](http://stanleychelsea.co.uk)

8 Milner Street  
Chelsea SW3 2PU

020 7352 9556

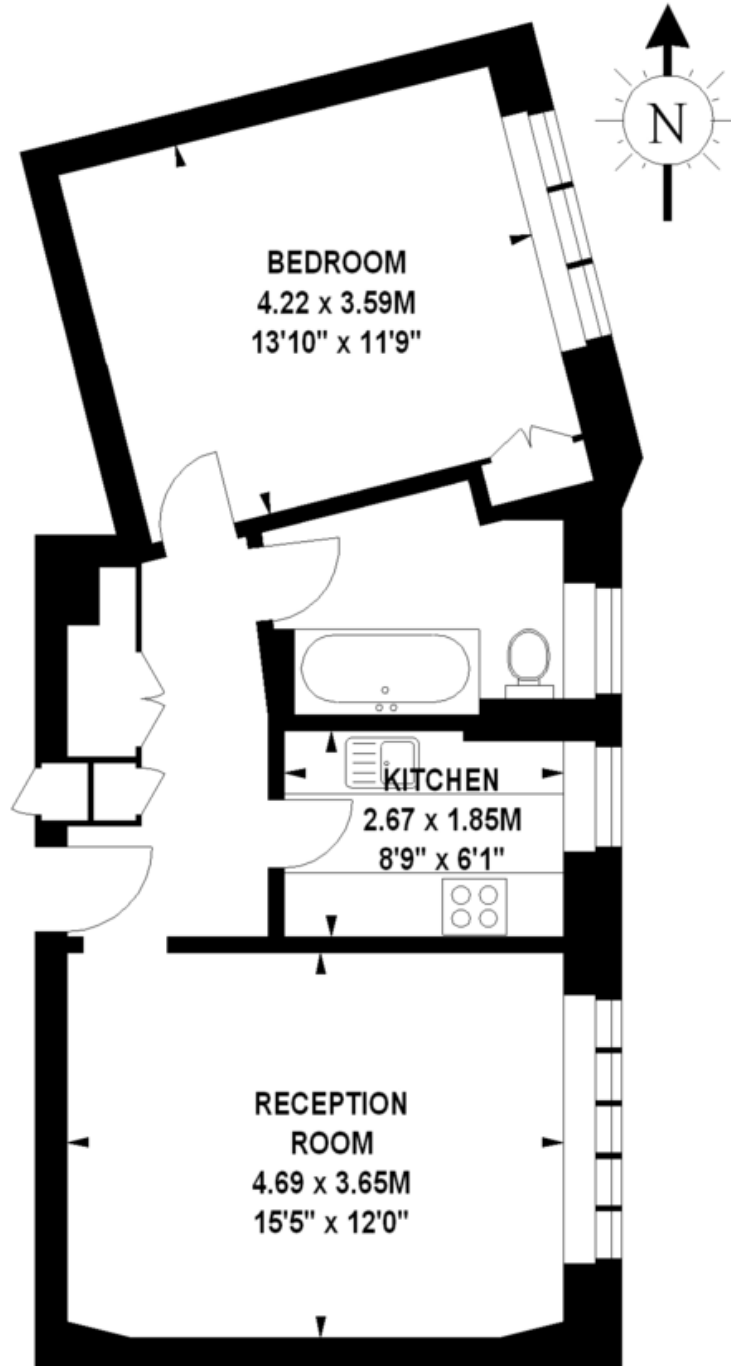
[sales@stanleychelsea.co.uk](mailto:sales@stanleychelsea.co.uk)  
[lettings@stanleychelsea.co.uk](mailto:lettings@stanleychelsea.co.uk)



# Marsham Court, SW1

Approximate gross internal area

52.02 sq m / 560 sq ft



## Eighth Floor

Illustration For Identification Purposes Only. Not To Scale

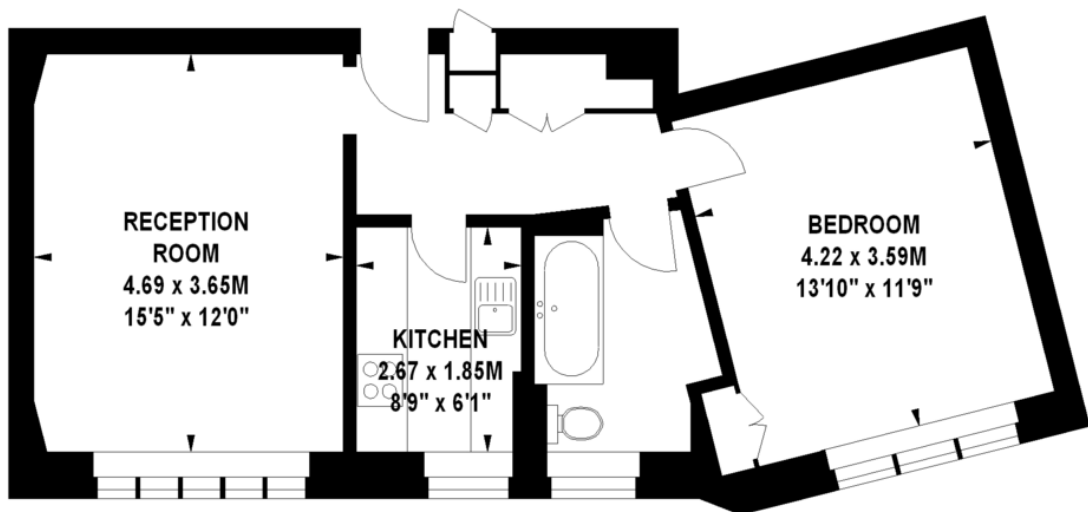
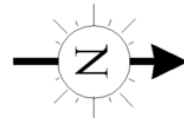
\*Floorplan Drawn According To RICS Guidelines

Copyright of FeaturePRO

# Marsham Court, SW1

Approximate gross internal area

52.02 sq m / 560 sq ft



## Eighth Floor

Illustration For Identification Purposes Only. Not To Scale

\*Floorplan Drawn According To RICS Guidelines

Copyright of FeaturePRO

## Energy Efficiency Rating

