

STANLEY
CHELSEA

02073529556
stanleychelsea.co.uk



Gunter Grove, London SW10

£1,250,000 Subject To Contract Leasehold, plus Share of Freehold





Double Terrace Delight!

A stylish two bedroom spacious flat located between the Kings Road and Fulham Road in Chelsea is moments away from trendy bars, great restaurants and boutique shops.

The highlight of this property is the swanky glass staircase and newly fitted kitchen. There are two new separate roof terraces which are perfect and spacious enough for entertaining guests during the summer months.

2 Bedrooms : 2 Bathrooms : Reception Room : Kitchen : 2 Balconies : Terrace : EPC Rating D

Terms and Conditions

Tenure: Leasehold; approx 109 years remaining, plus share of Freehold

Price: £1,250,000 Subject To Contract

Gunter Grove, London SW10

£1,250,000 Share of Freehold

stanleychelsea.co.uk

8 Milner Street
Chelsea SW3 2PU

020 7352 9556

sales@stanleychelsea.co.uk
lettings@stanleychelsea.co.uk



Gunter Grove

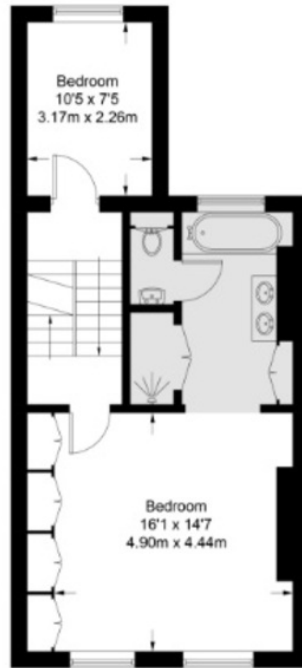
Approximate Gross Internal Area = 1117 sq ft / 103.8 sq m
Terrace = 269 sq ft / 25 sq m



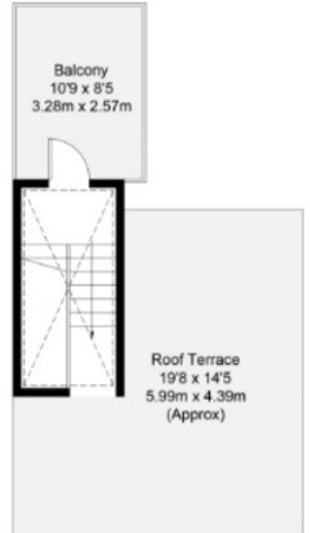
This Floor plan is for GUIDANCE ONLY and NOT FOR VALUATION purposes.



First Floor
520 sq ft / 48.3 sq m



Second Floor
513 sq ft / 47.7 sq m



Second Floor
70 sq ft / 6.5 sq m

Raised Ground Floor
14 sq ft / 1.3 sq m

Energy Efficiency Rating

	Current	Potential
<i>Very energy efficient - lower running costs</i>		
(92 plus) A		
(81 - 91) B		
(69 - 80) C		73
(55 - 68) D	67	
(39 - 54) E		
(21 - 38) F		
(1 - 20) G		
<i>Not energy efficient - higher running costs</i>		
England & Wales	EU Directive 2002/91/EC	